
Cuban & Puertorrican Masons: *“De un Pajaro las dos Alas”*

A Presentation at the Syracuse Liverpool Lodge

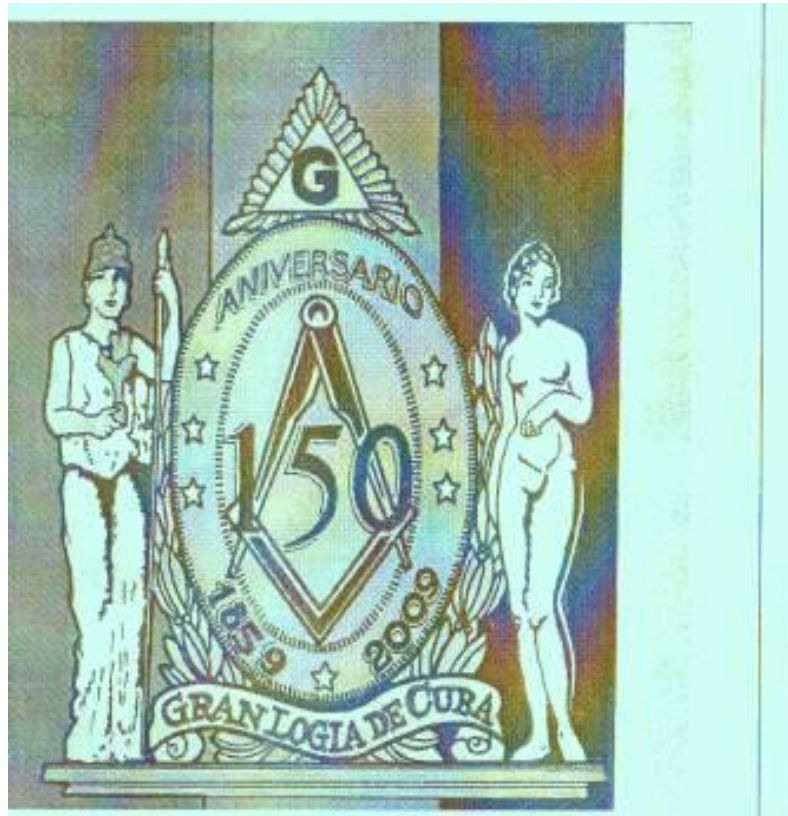
Jorge Luis Romeu, M.:M:.,
Resp. Log. Jose Celso Barbosa, No. 106
Bayamon, San Juan PR.
Email: romeu@cortland.edu

June 18, 2012.

CENTRAL AMERICA AND THE CARIBBEAN



Grand Lodge Cuba: 150 Anniversary



Grand Lodge of Cuba (GLC)

- *One of the oldest organizations*
 - With 150+ years of continued existence
- One of the largest
 - Nearly 30K members, nation-wide
- One of the most widely spread
 - Over 300 lodges, one in every town
- Internationally known and respected

Grand Lodge Building in Havana (1955)



Old Building of Grand Lodge of Cuba



Membership Distribution by Province

PROVINCE	Area (km ²)	Population	Lodges	Membrs	Mbr/Ldg	Efective
TOTAL	109,886.19	11,177,743	316	29127	92.2	10.423
PINAR DEL RIO	10,904.03	726,574	17	2706	159.2	14.897
PROV. HABANA	5,791.59	711,066	29	2494	86	14.03
CIUDAD HABANA	721.01	2,201,610	111	9329	84	16.49
MATANZAS	11,802.72	670,427	28	2370	84.6	14.14
VILLA CLARA	8,412.41	817,395	29	2667	92	13.051
CIENFUEGOS	4,180.02	395,183	14	1387	99.1	14.039
SANCTI SPIRITU	6,736.51	460,328	11	991	90.1	8.611
CIEGO DE AVILA	6,783.13	411,766	8	449	56.1	4.3.62
CAMAGUEY	15,615.02	784,178	14	709	50.6	3.617
LAS TUNAS	6,587.75	525,485	6	604	100.7	4.598
HOLGUIN	9,292.83	1,021,321	12	1138	94.8	4.4.57
GRANMA	8,375.49	822,452	10	1104	110.4	5.369
STGO DE CUBA	6,156.44	1,036,281	19	1992	104.8	7.689
GUANTANAMO	6,167.97	507,118	7	1187	169.6	9.363

Alta Camara; GLC

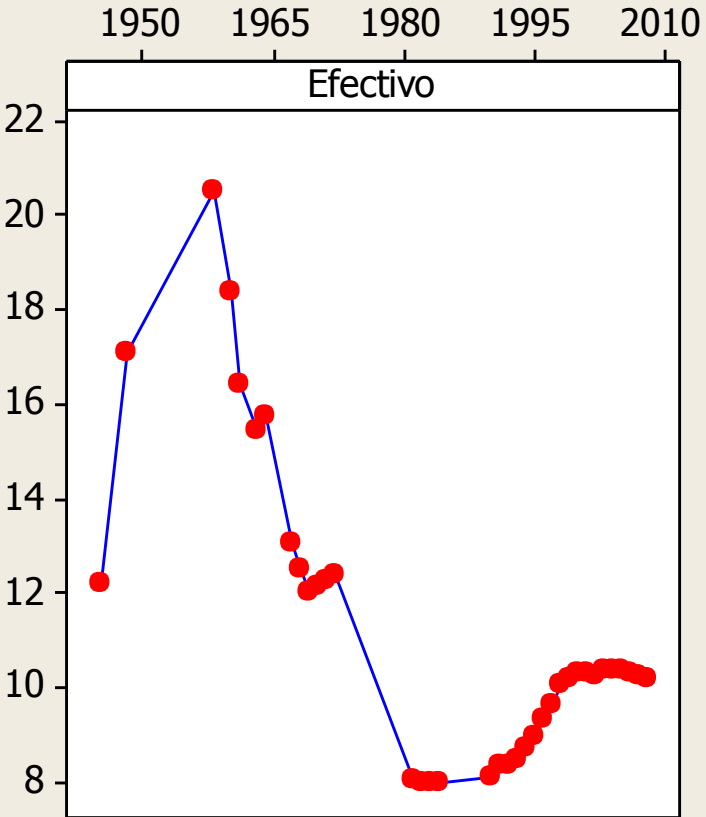
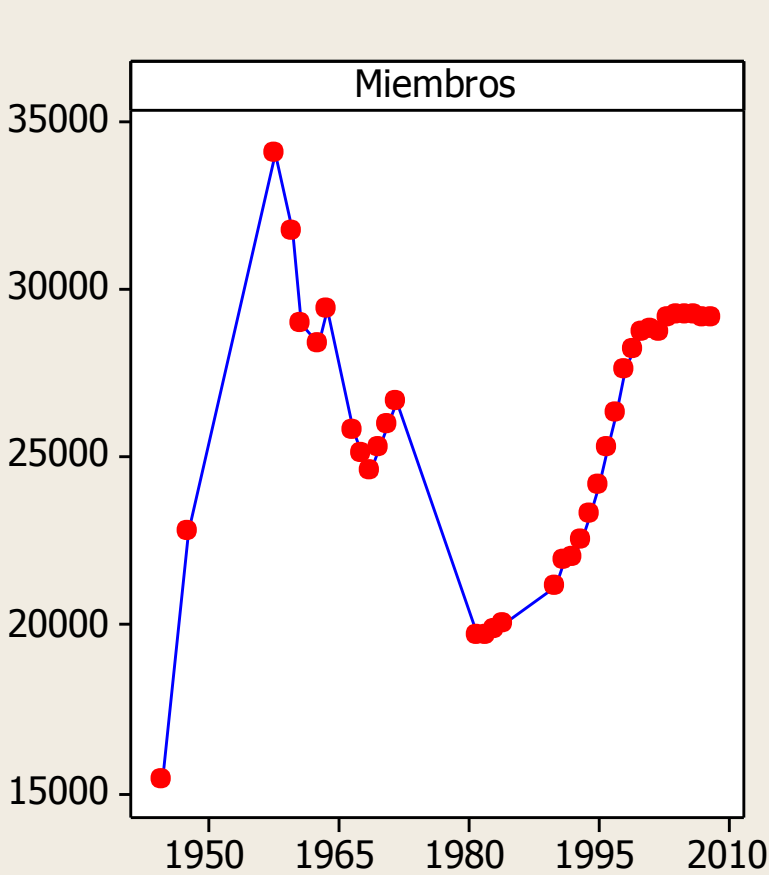


Masonic Museum, Grand Lodge.



Time Series of *total* and *effective* yearly membership:

Miembros Por ano: 1940 - 2010



Logia Verdad, Matanzas

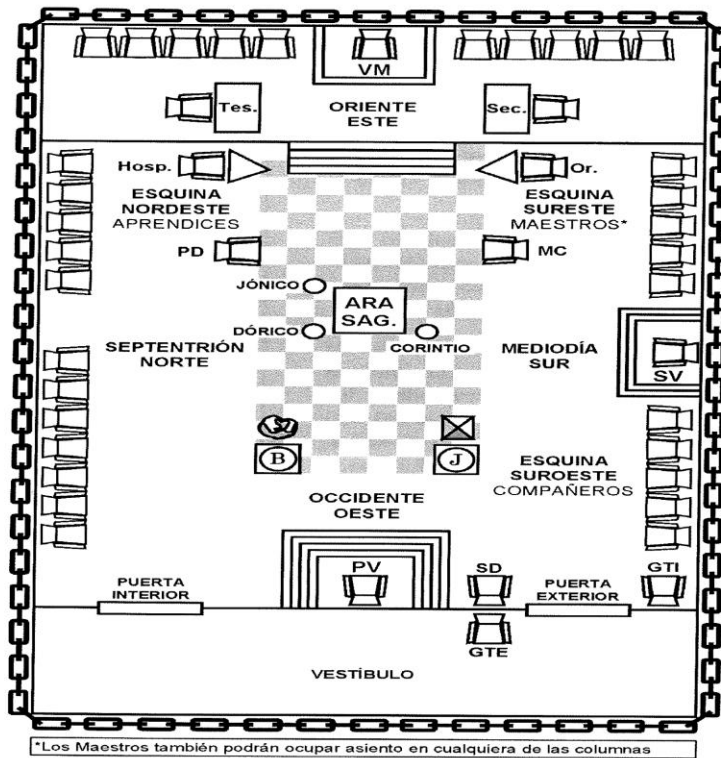


Characterization of CF by historical periods: 1945 to 2008:

Historical Epoch	Years	Membership trend	Relevant Events
<u>Before the revolution</u>	1945-1958	Accelerated growth	Grau, Prío and struggle against Batista
<u>First Years after the revolution</u>	1959-1969	Accelerated reduction	Emigration; B. Pigs; October Crisis; Rev.. Offensive; Umap
<u>Second Revolutionary Period</u>	1970-1976	Some stability	Zafra de los 10 Millones; End of Legal Emigration
<u>Third Revolutionary Period</u>	1977-1981	Moderate reduction	State Economy; Visits from “Community”; Mariel Boats
<u>Fourth Revolutionary Period</u>	1982-1990	Slow growth	Economic Liberalization after Mariel: Gorbachev; Disolution of USSR
<u>Fifth Revolutionary Period</u>	1991-2000	Accelerated growth	IV Congress of PCC; Special Period; Rise of Tourism and Economic Liberalization
<u>Sixth Revolutionary Period</u>	2001 to date	Stability	More Tourism; Support from Venezuela; Raul Castro.

A Cuban Lodge:





Another Cuban Lodge



Cuban Emigration to USA (INS Data): 1959 -1969

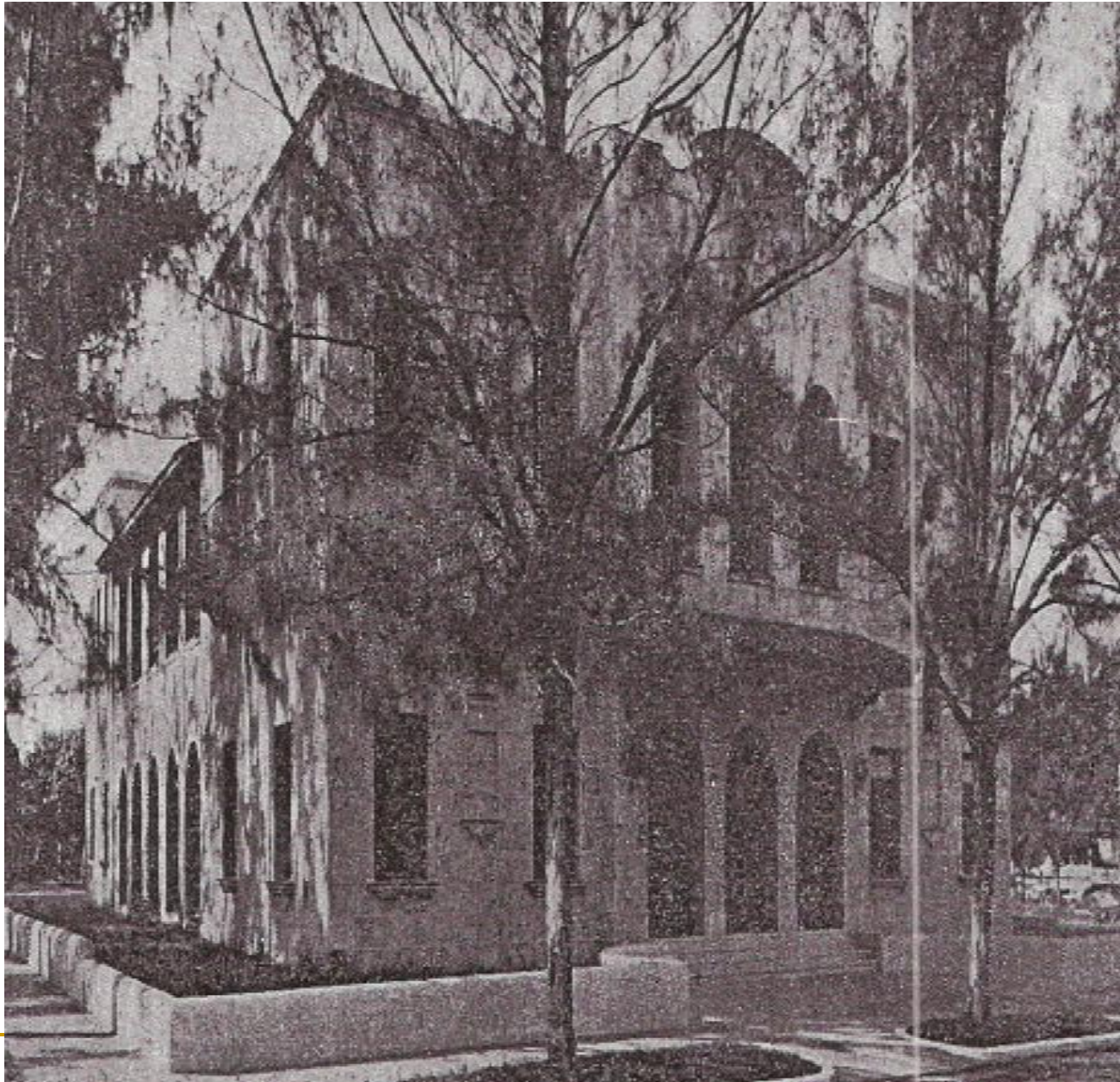
Miembros		Iniciales (en 1959):		34025	Algebraic Total			
Year	TotEmigr	Members	EffectMasons	Emigrat(x1.5)	Deaths(1%)	Losses(2%)	Gains	Total
1959	62,800	32738	0.02051	483	340	681	238	32759
1960	60,781	31492	0.01836	418	327	655	229	31567
1961	50,857	30449	0.01643	313	315	630	220	30454
1962	73,632	28940	0.01643	454	304	609	213	29295
1963	15,535	28621	0.01544	90	289	579	203	28184
1964	15,045	28313	0.01575	89	286	572	200	27874
1965	25,366	27793	0.01575	150	283	566	198	27512
1966	55,422	26657	0.01575	327	278	556	195	26826
1967	49,756	25637	0.01308	244	267	533	187	25800
1968	50,182	24608	0.01247	235	256	513	179	24813
1969	49,415	23595	0.01202	223	246	492	172	23819
Total	508,791			3026	3193	6385	2235	

Cuban Lodge



Philosophy of Cuban Freemasons

(Freemasonry) does not intend to impede the struggles for the different ideals that exist among men, but to seek that everyone may be able to defend one's principles, against the principles of others, without using any other weapon than reason, and without bringing to the struggle any other pursuit than the noble desire of seeing their ideals succeed, based upon their own merits. (Freemasonry) does not pretend to castrate the human thought, but on the contrary, to energize it in such a way, that it is no longer necessary to use imposition by force, to succeed. (**Grand Lodge of Cuba. 1936. *La masonería: sus fines, su historia, su obra.* Molina y Cia. Habana. Page 36).**)



Syracuse Liverpool Lodge



Grand Lodge, San Juan, Puerto Rico.



Origins of the GLSPR

- Started as a Provincial Grand Lodge
 - Of the Grand Lodge of Colon (Cuba)
- Organized as Independent GLSPR in 1885
 - One of four Grand Orients operating in PR
- After 1898, Spain ceded PR to the USA
 - Several Spanish Grand Orients decayed
 - Some of its lodges integrated to GLSPR
- GLC & GLSPR have many similarities

Leadership, GLSPR



GLSPR, Main Hall



Logia Sol de Oriente





Logia Verdad y Honestidad





Freemasons in Cuban Civil Society

- Incubators of Citizens
 - Free men; independent thinkers (out of box)
- Incubator of new Ideas
 - Open discussions, in an environment of respect
- Increase the Social Capital
 - Interaction between different people/social strata
- Tolerance and Acceptance
 - Of new/different ways of seeing things
- Democratic rules and procedures
 - Freely elected leaders and judicial system

