

Topic 3, Cells and Cell Processes

Group 1

1. Give a brief description of the 4 basic building blocks.

Building Block	Common Components	Description	Function
----------------	-------------------	-------------	----------

1.

2.

3.

4.

Group 2

Describe the components of the cell theory.

Cell Organelle Questions

Description of Organelle	Picture	Function	Membrane Bound?	Plant/Animal/Both
--------------------------	---------	----------	-----------------	-------------------

Group 3

Membrane

Description of Organelle	Picture	Function	Membrane Bound?	Plant/Animal/Both
--------------------------	---------	----------	-----------------	-------------------

Group 4

Cell Wall

Description of Organelle	Picture	Function	Membrane Bound?	Plant/Animal/Both
--------------------------	---------	----------	-----------------	-------------------

Group 5

Nucleus

Description of Organelle	Picture	Function	Membrane Bound?	Plant/Animal/Both
--------------------------	---------	----------	-----------------	-------------------

Group 6

Mitochondria

Description of Organelle	Picture	Function	Membrane Bound?	Plant/Animal/Both
--------------------------	---------	----------	-----------------	-------------------

Group 7

Ribosomes

Description of Organelle	Picture	Function	Membrane Bound?	Plant/Animal/Both
--------------------------	---------	----------	-----------------	-------------------

Group 8

Lysozymes

Description of Organelle	Picture	Function	Membrane Bound?	Plant/Animal/Both
--------------------------	---------	----------	-----------------	-------------------

Group 9

Endoplasmic Reticulum

Description of Organelle	Picture	Function	Membrane Bound?	Plant/Animal/Both
--------------------------	---------	----------	-----------------	-------------------

Group 10

Flagella/ Cilia

Description of Organelle	Picture	Function	Membrane Bound?	Plant/Animal/Both
--------------------------	---------	----------	-----------------	-------------------

Group 11

Chloroplast

Description of Organelle	Picture	Function	Membrane Bound?	Plant/Animal/Both
--------------------------	---------	----------	-----------------	-------------------

Group 12

Describe a concentration gradient.

Transport Questions

What is transported? What direction is movement? What requirements?

Group 13

Describe diffusion.

Group 14

Describe passive transport (facilitated diffusion).

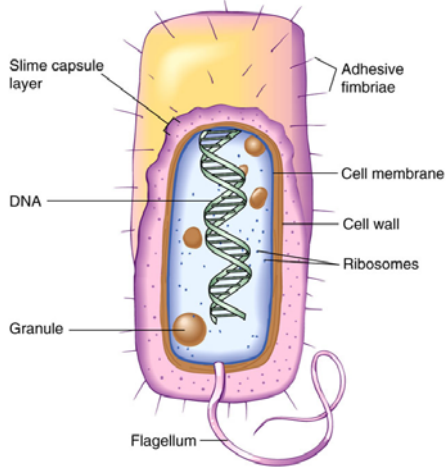
Group 15

Describe active transport.

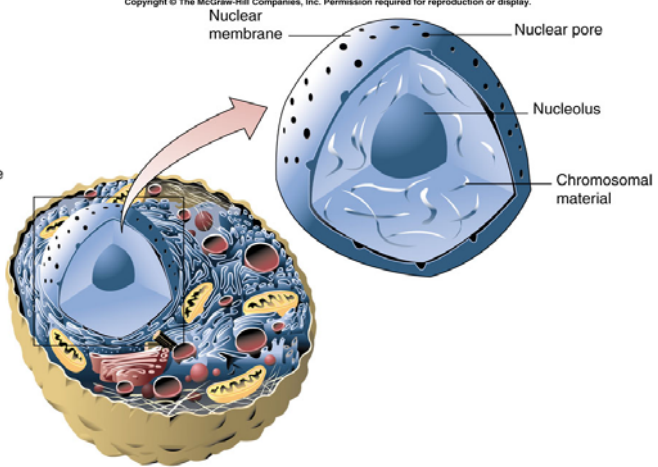
Group 16

Describe osmosis.

Copyright © The McGraw-Hill Companies, Inc. Permission required for reproduction or display.



Copyright © The McGraw-Hill Companies, Inc. Permission required for reproduction or display.



Copyright © The McGraw-Hill Companies, Inc. Permission required for reproduction or display.

