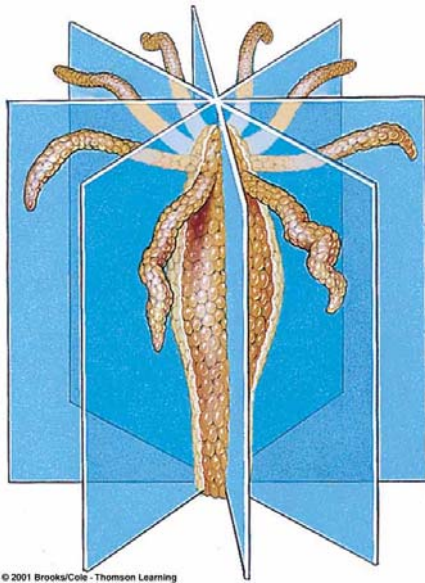


General Animal Characteristics

SCI141 Lab 6

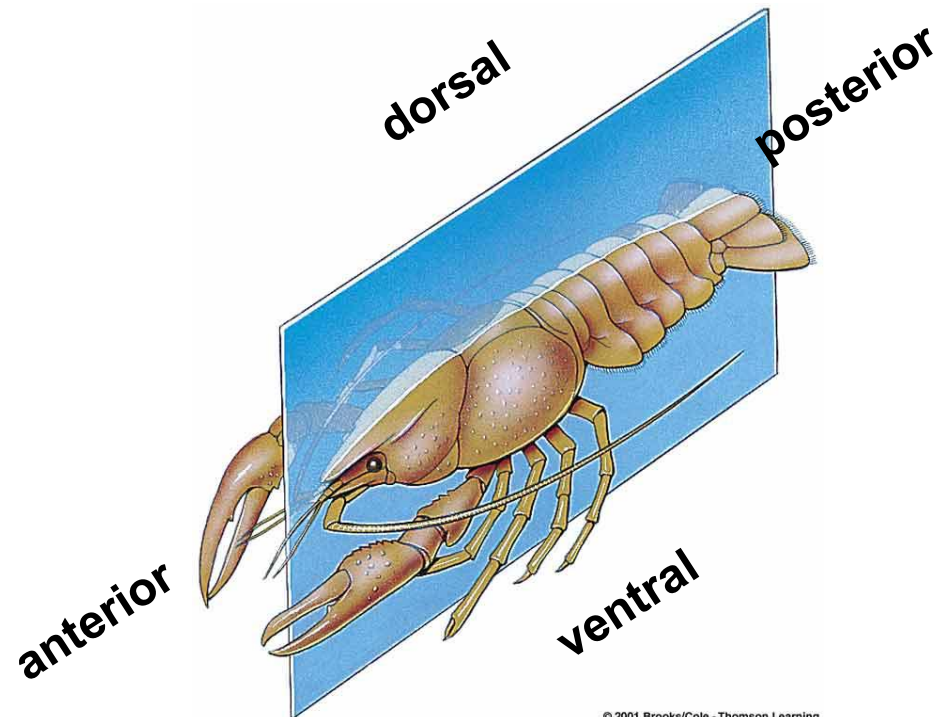
Symmetry

- Body shape around the central axis



© 2001 Brooks/Cole - Thomson Learning

Radial symmetry



© 2001 Brooks/Cole - Thomson Learning

Bilateral symmetry

Skeleton

- Internal – Like humans
- External – Like insects
- No Skeleton – Like Earthworms

Body Plan

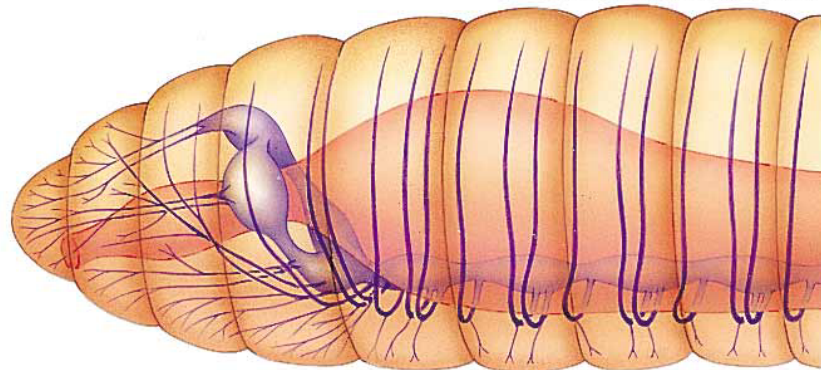
- Smooth

© 2002 Brooks/Cole - Thomson Learning



- Segmented

© 2001 Brooks/Cole - Thomson Learning



Appendages

- General vs. Specific

- Jointed

